

# PUTNEY AUCTION SERVICE

## TRACTORS, FARM EQUIPMENT, TRAILERS, BOATS, ANTIQUES, COLLECTIBLES, PRIMITIVES, FURNITURE, LAWN & GARDEN, TOOLS, HOUSEHOLD MOVING & ESTATE AUCTION

**Sunday, July 22nd, 2018 at 12:01PM**

907 W. 2nd (Hwy 92 West) • Indianola, IA 50125 • 515-961-4124 • [www.putneyauction.com](http://www.putneyauction.com)

Food provided  
by:  
Smoke Signals  
Catering



**Open Wednesday - Saturday 8am to 5pm for viewing. Its will be a large Auction and will run 2 rings all day!**

**TRACTORS, FARM EQUIPMENT:** 580 Case tractor/backhoe w/3 buckets, hoe & cab-Extra clean; Ferguson tractor; 20' w/5' beaver 3 axle trailer w/ 5th wheel hitch; 18' bumper hitch stock trailer; 3pt cherry picker; International 47 square baler; Flare box wagon-good running gear; Full line of Ferguson equipment: 3pt bottom plow, 3pt 8'disc, 3 pt. field cultivator, 3 pt. rotary hoe, 2 drag harrows, 3 pt. harrow, 3 pt. 2 bottom planter belt driven, 3 pt. blade; King Kutter 7' 3 pt. blade; Continental a3 pt. post hole auger; Case 3 pt. 2 bottom plow; Pull type fertilizer; 500 gallon water tank; 30' bale elevator; 15' bale elevator; Galvanized steel.

**BOATS:** Tri Hull 20' w/Cobalt V8 motor & trailer; V Hull 21' w/Cobalt V8 motor & trailer.

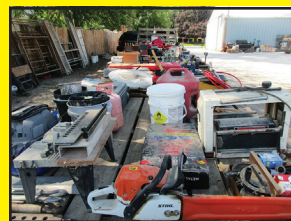
**LAWN & GARDEN:** Toro snowblower; Mantis tiller; Lawn carts; Pull type spreader; Swimming pool; Electric chainsaw; Gas blower; Tractor lawn sprinkler; Homelite chainsaw; Sunbeam gas grill; Lots of hand tools, shovels, rakes, axes etc.; Heavy duty electric mulcher; Stihl weed eater; Leaf blower; Trellis; Smoker; Steel wheels; Park bench; Patio umbrellas; Bar stool patio chairs; Lawn sweeper; Wheel barrow; Fertilizer/spreader.

**SHOP TOOLS/OUTSIDE:** DeWalt floor drill press; Rockwell band saw; Century 20 ton hydraulic press; 4' sheet metal brake; Jet 10" table saw; Craftsman wood lathe; Jet jointer; Metal storage bins; Roof jacks; Folding saw horses; Acetylene torch; Stihl MS311 chainsaw; Receiver hitch; Jet 12" plane; Sewer snakes; Wagner airless paint sprayer; Porta Cable biscuit jointer; Rothenberger scope; Bostitch trim gun; Craftsman digital torque wrench; Sheet metal tools; Clamps; Air hose; Welding helmet; Dremel tool; A/C gauges; Hitachi miter box; Bolt cutters; Conduit benders; Bench grinders; 20 ton bottle jack; Pullers; Pipe cutters; Milwaukee cordless 2 speed grease gun; Straps; Come alongs; Air tools; Electric impact; Heavy duty extension cords; New trailer jacks; Camping supplies; Old shoe shine kit; Wagner paint sprayers; Jig saws; Belt sanders; Tackle boxes; Sump pumps; Nails & screws; 100' & 500' tape measures; Socket sets; Several live traps; New tarps; Snow cleats; Shop lights; Small carry around torch set; B & D grinder; B & D routers; Milwaukee chop saw; DeWalt router; Cordless caulking gun; Dado blades; Wood lathe tools; Porta Cable framing gun; CST Berger self-leveling laser w/tripod & story pull-Like New; Palm deck screw w/Milwaukee drill; Signal gas analyzer; Porta Cable roofing nailer; Paslode nailer; Trailer lights; Lots of brass & copper fittings; Shop vac; Router table; 3 bull floats; Roller stands; T post puller; PVC fittings; JD A90 kerosene heater; All Pro 3500 BTU LP heater; Craftsman router & table; 10 sections scaffolding w/aluminum floor pans & wheels; 8' aluminum step ladder; Lots of plumbing supplies; 250' 3/4 gas line; Paint supplies; Battery charger; 110 A/C; 4 pickup tool boxes; Shop shelving; Bench vise & table; Craftsman 10" table saw; Files cabinets-2 & 4 drawer; Air tank; Porta Cable Electric air compressor; Jack stands; 5 gallon shop vac; Stihl band saw; Two wheeler; Large torch set; North Star pressure washer; Electric pressure washer; Window a/c units; Stove pipe; Extension ladders; Creepers; Gas fire place; Mitsubishi 5800 generator; Rough cut lumber.

**ELECTRONICS/APPLIANCES:** HoveRound powered wheelchair; Planet Mobility P3 Cruiser; Receiver hitch carrier for HoveRound; Harmer power lift; Danby washer; Montgomery Ward's freezer; Frigidaire refrigerator; Kenmore humidifier; Bemis humidifier; Apollo dehumidifier; Soleus Air dehumidifier; Lasko ceramic heater; Eden Pure heater; Whirlpool portable air conditioner; GE microwave; Maytag mountable microwave; Eureka vacuum; Memorex DVD player; Symphonic VHS player; Sony 5 CD disc changer; HP Officejet J4580; HP printer.

**FURNITURE:** Waterfall dresser & dressing table; Bedroom set w/ full bed, mirrored dresser & chest of drawers; Bedroom set w/full frame, mirrored dresser & chest of drawers; Bunk bed frame; Several bed frames-full & queen; Lift chair; 2 love seats; Round table w/1 leaf; Large square table; Tv stand; 4 matching swivel bar stools; Coffee tables; Small lighted curio cabinet; TV trays; Lighted hutch; Matching parlor chairs; Living room set; Table w/6 chairs, pads & matching buffet; Fern stands; Ping pong table; Brass bed; Murphy bed; Display rack; Display shelf; Sofa table; Trunks; Book shelves.

**HOUSEHOLD, COLLECTIBLES, ANTIQUES & PRIMITIVES:** 1986 Fleer Jordan sticker rookie card; Babbador bugle; Ice cream freezer; Corning Ware; Pyrex; Food processor; HO scale trains; Max train set w/track; Flatware; Kitchen utensils; Bell collection; Pink glass; Board games; CD's/DVD's; Rug beater; Willy the ventriloquist doll; Wheeled walker; 2 wheel chairs; Jewelry boxes; Glass basket; Kerosene lanterns; Blue glass; Dolls; Telescope; Office supplies; Milk glass; Brass candle sticks; Cast iron toy stove; Willow Tree figurines; Precious moments; Several new candles; Cast iron skillets; John Deere & Caterpillar items; Vintage kitchen utensils; Medicine cabinet; Ertl toys; Binoculars; Linens/doilies; Baskets; Lots of metal lunch boxes; Lots of home décor; Ice cream dishes; Norman Rockwell figurines; Stemware; Coffee grinder; Wooden elephants; Cut glass; Quilts; Baseball cards-a few 1961; Albums & 45's; Rosary beads; Holiday decorations; Stainless steel bowls; Dinnerware set; Canister set; Fans; Lamps; Prints & pictures; Hard & soft luggage; Sewing machines; Coffee makers; Vintage radios; Silver service; Espresso maker; Dutch ovens; Mixing bowls; Doll furniture. **And many more items left to be unboxed. Unique items to be discovered!**



# Putney Auction Service

Mark Putney - Auctioneer; 907 W 2nd AVE. Indianola, IA 50125

Cell- (515) 249-3676 Office- (515) 961-4124

View Photos online @ [www.putneyauction.com](http://www.putneyauction.com) and [www.auctionzip.com](http://www.auctionzip.com)



Putney Auction Service