

POTTAWATTAMIE COUNTY, IOWA FARMLAND AUCTION

Scan the QR
Code for more
information.



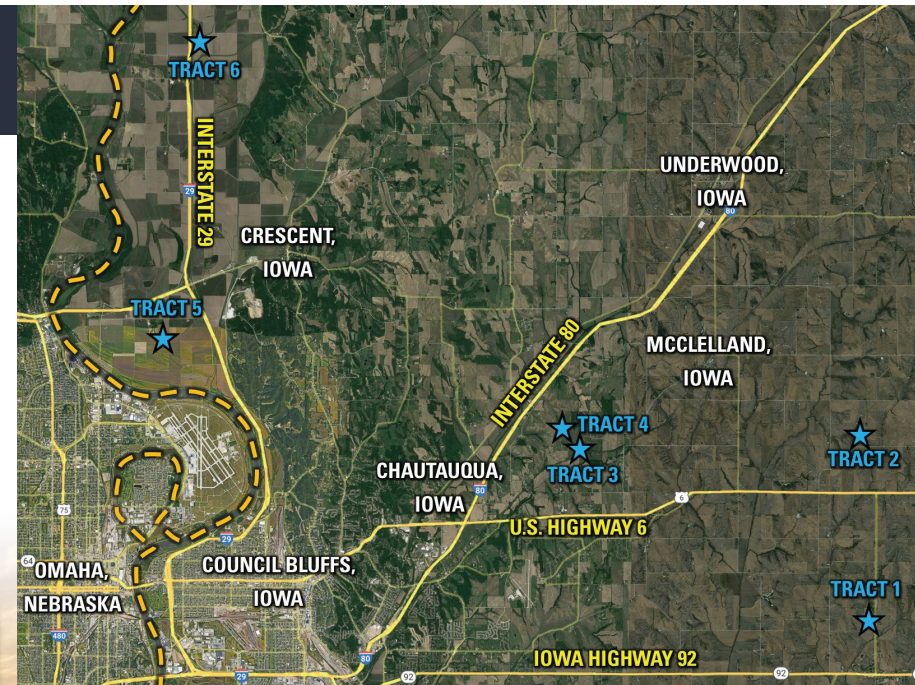
PeoplesCompany.com | Listing #17083

THURSDAY, OCTOBER 26, 2023 AT 10:00 AM
UMBA Hall | 300 2nd Avenue | Underwood, IA 51576

657.18 ACRES M/L | OFFERED IN 6 TRACTS

Peoples Company and the Lund Company are pleased to represent J Pryor Farms LLC in the sale of 657.18 total acres m/l of prime Pottawattamie County, Iowa farmland offered through 6 different tracts ranging in size from 49.22 acres m/l to 174.66 acres m/l.

- Tract 1:** 49.22 acres m/l with 48.47 FSA cropland acres carrying a CSR2 soil rating of 71.2.
- Tract 2:** 77 acres m/l with 71.23 FSA cropland acres carrying a CSR2 soil rating of 70.8.
- Tract 3:** 66 acres m/l with 64.34 FSA cropland acres and a CSR2 rating of 52.2.
- Tract 4:** 174.66 acres m/l with 166.13 FSA cropland acres carrying a CSR2 soil rating of 69.6.
- Tract 5:** 150.12 acres m/l with 137.03 FSA cropland acres carrying a CSR2 soil rating of 64.5.
- Tract 6:** 140.18 acres m/l with 139.72 FSA cropland acres carrying a CSR2 soil rating of 59.7.



Tract 1 49.22 Acres M/L



Tract 2 77 Acres M/L



Tract 3 66 Acres M/L



Tract 4 174.66 Acres M/L



Tract 5 150.12 Acres M/L



Tract 6 140.18 Acres M/L



MATT ADAMS: 515.423.9235, Matt@PeoplesCompany.com
ANDREW ZELLNER: 712.898.5913, AndrewZ@PeoplesCompany.com
JIM HAIN: 402.981.8831, James.Hain@LundCo.com

