

FARM RETIREMENT AUCTION

Tuesday, December 5, 2023 @ 10 am • 1223 Adams - Taylor St, Nodaway, IA

Live and Online • Note: All major equipment has been shedded. 50+ years of Accumulation!

Tractors and Combines

- 2013 JD 8235R, 2797 hrs., P.S., 1300 frt. end, 4 SCVs, 900 lb. rear wt., frt. wts., 480/80R46 rubber.
- 2012 JD 8235R, 4751 hrs., P.S., 1300 frt. end, frt. wts., 4 SCVs, 480/80R50 rubber.
- JD 4020 D, 1967, WF, dual hyd., runs good.
- CIH 2388, 4334/3054 hrs., newer hydro & injectors, chopper, spreader, 24.5 x 32 rubber, serviced yearly by Vettors.
- CIH 3206 C.H., 6-30, only 1500 acres, header control.
- CIH 1020 platform, 25'
- Horst head trailer, 25'
- Industrias America 425 head trailer.

Pickups, Trailers and Vans

- 2004 Ford 350, 4x4, V-10, 148,000 miles, auto, steel flatbed.
- 2008 Donahue 25' + 5' gooseneck flatbed, tandem duals, ramps.
- 2006 Chrysler Town & Country van, 169,000 miles, runs good.
- 2008 Chrysler Town & Country can, 300,000 miles, runs good.
- 1990 Mercury Grand Marquis, 121,000 miles, runs good, overdrive is out in transmission.
- 1988 F250, 4x4, not running, w/MyDHanD cube feeder.
- 5x8 AlumLite golf cart Trailer.

Drill, Planter, Seed Tender & Tillage

- JD 750 NT drill, grass seed, dolly wh.
- JD 1790 planter, 2004, 12-24, Agleader clutches, Agleader Integra display, ground drive, NT coulters.
- CIH 3950 disc, 25 1/2' blades 19 3/4" & 21", 9" sp., 3 tine harrow.
- CIH 4800 F.C., 30' 2 tine harrow.
- Meridan RT 240 seed tender.
- UM Zone Builder 112, 5 shank inline ripper, like new.

GPS Equipment

- JD 2630 display w/autotrac.
- 2 JD SF 3000 w/SF1.

Semi and Grain Trailer

- 2005 Peterbilt 379, day cab, C-13 Cat engine, 10 sp., clean
- 2007 Timpte 42' grain hopper, elec. tarp.

Shop Equipment

- 200 lb. anvil; 50 ton hyd. press; cutting torch; camel back drill press w/bits, good; old forge tools; Rigid elec. pipe threader; plus other farm miscellaneous.

Other Good Equipment

- J&M Grain Storm 1000 grain cart, tarp.
- Westfield MKX 10-83, elec. swing hopper lift, remote, like new.
- Westfield 10-71 swing hopper.
- Farm King 831 truck auger, elec.
- 4 Parker 2600 gravity wagons.
- M&W DF 12 hay rake, w/center wheel.
- Wheatley 8 bale trailer.
- Wheatley 3 pt. carrier.
- CIH 1250 grinder mixer, scales.
- Grizzley 3 pt. backhoe.

Miscellaneous and Older Equipment

- Westfield 10" swing hopper w/power swing, low use; stainless steel 2 bu. ATV feeder; MJM bean auger for wagon, good; Danuser posthole digger, 12"; JD 660 hay rake; JD 350 sickle mower, 9'; JD 4 sec. harrow on evener; Noble 8 row hyd. fold cult.; steel wheel rake; 3 pt. tine harrow; Lundell gravity - 12 ton gear; 12' Landoll disc chisel; AC monoframe plow, 5 bottoms; Emmert loading chute; hay racks & lowboys; older tandem sprayer; 2 Kelly Ryan manure spreaders, needs work; 7 Hedstorn concrete hog feeders and waters; Vermeer bale unroller; good bridge planks & 30' bridge I-Beams; plus older equipment for iron.



Lyle and Sue Frey
712-370-5374



Auctioneers: Steve Bergren 712-789-0847 • Grant Vrba 712-789-2038 • Pete Myers 712-202-0108
for online Brad Bergren 712-789-2053

Terms: cash or good check; not responsible for accidents or theft; verbal announcements on sale day take precedence. Lunch and port-a-pots on grounds.

ABSOLUTE LAND AUCTION

Friday, December 15, 2023 @ 10 am • Gold Fair Building - Red Oak, IA

Farm Located NW of Red Oak, 1 mile west of Wales on south side of the road.

310 Acres M/L

Note: To be offered in 2 parcels, 217 acres M/L and 95 acres M/L

- Brief Legal - N 1/2 section 20 Lincoln Twn. Montgomery Co. IA, except for the building site.
- Farmland Acres - 309.78
- Cropland Acres - 302.40
- CSR II - 73.5 on 312 acres / 73.9 on 95 acres & 73.5 on 217 acres, estimated.
- Corn Base - 174.42
- Corn PLC Yield - 156
- Bean Base - 95.63
- Bean PLC Yield - 46
- Note: Bases will be split by F.S.A. if sold separate. Survey will be completed before closing by the seller, if sold separate before closing. The bin site will stay with the 217 acre parcel.
- See webstie for map of the surveys.
- Improvements - 2 - 9,000 bu. bins and older silo structures. The farm has established narrow base terraces with tile.
- Taxable Acres - 312 minus surveyed acreage site.
- Taxes - \$11,752, prorated to closing date.
- Closing date subject to survey if needed or approximately Jan. 15, 2024
- Terms - 10% down day of auction. Deed and abstract will be given at closing.
- Possession - Full 2024 farming rights.
- Closing Agent - Billings & Mensen Law Office, Red Oak, IA.
- Agency - Bergren Real Estate & Auction, L.L.C. are seller's agent only.
- Auctioneer's Note: This is a high quality Montgomery Co. upland farm that has lots of conservation work and has always been well cared for! Sells with full farming rights for 2024.

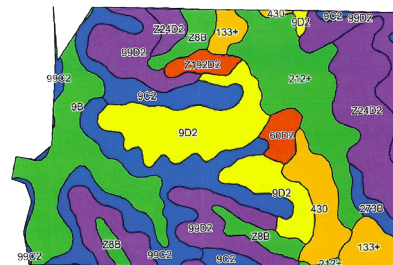
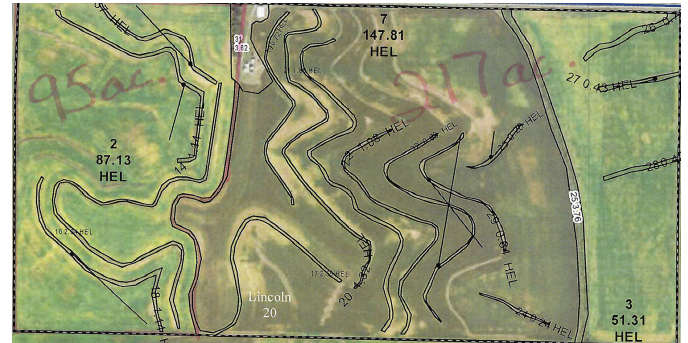
Information received from sources believed to be reliable.
Sellers & Auctioneer do not guarantee their accuracy. Buyers are invited to do their own research prior to sale.

Davidson Farms, L.L.C.



Auctioneer:
Steve Bergren 712-789-0847

Terms: cash or good check; not responsible for accidents or theft; verbal announcements on sale day take precedence. Lunch and port-a-pots on grounds.



Area Symbol: IA137, Soil Area Version: 31							
Code	Soil Description	Acres	Percent of field	CSR2 Legend	Non-irr Class *c	CSR2**	CSR *n NCCPI Soybeans
99D2	Exira silty clay loam, 9 to 14 percent slopes, eroded	81.34	25.9%	IIIe	IIIe	59	55
99C2	Exira silty clay loam, 5 to 9 percent slopes, eroded	50.23	16.0%	IIIe	IIIe	87	65
9B	Marshall silty clay loam, 2 to 5 percent slopes	37.61	12.0%	IIIe	IIIe	95	85
9D2	Marshall silty clay loam, 9 to 14 percent slopes, eroded	29.45	9.4%	IIIe	IIIe	61	58
212+	Kennebec silt loam, 0 to 2 percent slopes, occasionally flooded, overwash	25.40	8.1%	IIV	IIV	91	86
Z24D2	Shelby clay loam, deep loess, 9 to 14 percent slopes, eroded	24.55	7.8%	IIIe	IIIe	52	55
9C2	Marshall silty clay loam, 5 to 9 percent slopes, eroded	14.09	4.5%	IIIe	IIIe	87	68
Z8B	Judson silty clay loam, deep loess, 2 to 5 percent slopes	13.92	4.4%	IIIe	IIIe	92	80
430	Ackmore silt loam, 0 to 2 percent slopes, occasionally flooded	10.30	3.3%	IIV	IIV	77	83
11B	Ackmore-Colo-Judson complex, 0 to 5 percent slopes	8.43	2.7%	IIV	IIV	81	68
133+	Colo silt loam, deep loess, 0 to 2 percent slopes, overwash, occasionally flooded	7.89	2.5%	IIV	IIV	78	85
Z192D2	Adair clay loam, deep loess, 9 to 14 percent slopes, eroded	3.80	1.2%	IVe	IVe	14	45
60D2	Malvern silty clay loam, 9 to 14 percent slopes, moderately eroded	3.78	1.2%	IVe	IVe	5	25
Z73B	Olmitz loam, 2 to 5 percent slopes	3.00	1.0%	IIIe	IIIe	89	72
Weighted Average						2.60	73.5