



BOONE COUNTY, IOWA FARMLAND AUCTION

131.06 ACRES M/L | FRIDAY, NOVEMBER 17 | 10:00 AM

Central Iowa Expo | 1827 217th Road | Boone, IA 50036



SCAN THE QR CODE
TO VIEW THIS
LISTING ONLINE.

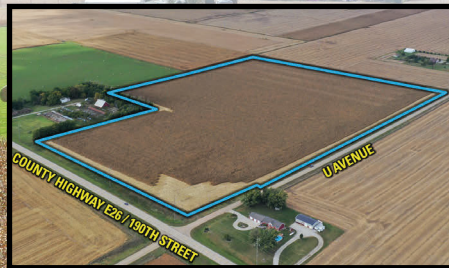
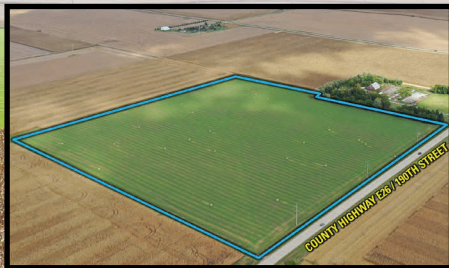
Boone County, Iowa Farmland Auction – Mark your calendar for Friday, November 17th, 2023! Peoples Company is pleased to represent The Estate of Sharon Thompson in the sale of 131.06 total Acres M/L of prime Boone County, Iowa farmland.

- The farmland is located immediately east of Boone, Iowa with frontage on paved County Highway E26 / 190th Street and in Sections 17 & 21 of Jackson Township.
- The farmland is located within two drainage districts, DD 159 & 215 with 4", 6", 8", and 12" county tile that runs throughout the farmland.
- The farmland will be sold as three individual tracts using the "Buyer's Choice" Auction Method, where the high bidder can take, in any order, any or all tracts for their high bid.

Tract 1: 39.90 Gross Acres M/L
with 36.59 tillable acres. CSR2 of 88.6.

Tract 2: 51.40 Gross Acres M/L
with 49.79 tillable acres. CSR2 of 85.7.

Tract 3: 39.76 Gross Acres M/L
with 35.54 tillable acres. CSR2 of 81.9.



MATT ADAMS

515.423.9235 | IA LIC S59699000 | Matt@PeoplesCompany.com

PeoplesCompany.com
Listing #17168

