

YEAR-END AUCTION

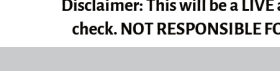
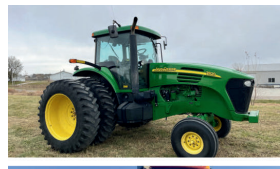
LIVE AUCTION with Online Bidding



Saturday, December 16 - 10:30 a.m.

Address: 625 New York Ave, Creston, Iowa - On Highway 34 heading west out of Creston.

Full Listing Online at: www.RiceAuctionCompany.com



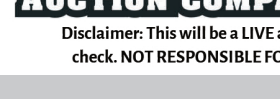
TRACTORS: 2022 John Deere 5075E MFWD with 9 hours. JD 520M loader with factory joystick; 2021 340 Magnum AFS connect CVT. Pro 1200 monitor. RTK guidance; 12XX hours; 2019 John Deere 8270R MFWD with 605 ONE OWNER HOURS. IVT; 2005 John Deere 7520 with John Deere 741 Loader, joystick. ONE OWNER HOURS. 76XX hours; 2004 John Deere 7820 2wd. 4495 ONE OWNER HOURS; 2001 Case IH MX220 MFWD with 4998 Second owner hours; Challenger MT555D with Challenger ML79 loader, 3775 hours; Case IH 7240; 1972 International 1468, shows 9553 hours, very good restoration; 1967 International 1206; International 1466; International 560 wide front; Farmall Super H; Farmall M; Farmall Super MTA; Allis-Chalmers D-17 with loader; Ford 601 Workmaster

HAY & LIVESTOCK: 2021 Vermeer VT660 vertical twin screw mixer wagon.; 2020 Highline Bale Pro CFR651 Bale Processor with final cut and slat feed floor; Vermeer BP8000 bale processor; 1999 Vermeer BP6800 bale processor; Kuhn Knight 3130 Roughage Maxx feed wagon; Turbo Max 6046 vertical mixer feed wagon with scales; Hesston bale processor; New Holland 355 Grinder/Mixer - very nice; 2013 John Deere 569 Mega wide Plus, 6166 bales, ONE OWNER; John Deere 567 Mega Wide Baler, 16,768 bales, second owner; John Deere 535 Baler; Vermeer 605SM Baler; Case IH RBD561 baler with monitor; John Deere 336 square baler with Hoelscher accumulator; New Holland 310 Square Baler; 2019 Case IH DC133S; John Deere 946 MoCo; KUHN GMD700GII 3-point disc mower; New Holland H6750 3-Point disc mower; Kuhn SR300 Speedrake, 12 wheels; 2004 Vermeer R23A hydraulic rake; KUHN GF5001THA hay tedder; M&W 10-wheel rake; New Holland 329 manure spreader; John Deere 780 Manure Spreader; Schultz 5x11 manure spreader; Rawhide Standard Portable corral; John Deere MX7 3point Brush hog. Like new; John Deere HX20 Batwing mower. 20ft; 2 - Land Pride RCR2584 7ft brush hog mower; For-Most 125 chute with headgate and palpation cage; For-Most 30 Headgate with chute and palpation cage; Sullivan Fitting Chute; Creep Feeders; NEW Free-Standing Panels - 24ft, 24ft with 12ft swinging gates, 24ft with 24in bunks; Large assortment used cattle gates

AUTOS/ATV/UTV: 2015 Ford F350 Crew Cab SW with C5 Mfg 56N Bale Bed, 142K miles; 1999 Ford F250SD with Bale Bed; Suzuki Side Kick; 2014 Polaris RZR 900 with 419 hours; Polaris 500 Scrambler AWD 4 Wheeler; Polaris 650 4x4 4 Wheeler

CONSTRUCTION: 2019 JCB 270 tracked Skid Loader, 1249 hours; 2017 DEERE 724K Wheel Loader, 6815 hours; Hydra-Mac 2050 Skid Loader

MORE ITEMS ARRIVING AFTER SALE BILL PRINTED



PLANTING & TILLAGE: 2005 Kinze 3200 12 row, 30in; 2003 Case IH 5500 Soybean Special, 30ft, 15in spacings; 2 - John Deere 7200 12 row vac planter, 30in spacings; John Deere 750 No Till Drill, 14ft 5in width; Great Plains Solid Stand 15ft 3-point drill; Marliiss 14-10-1212 NT; 13' no-till drill; John Deere 8300 Drill; Case IH 955 Cyclo Air mounted to Yetter pull-type cart; Triggs seeder with small seed spreader; Meridian 240RT Seed Tender; Friesen 220 Seed Tender; Buffalo No Till cultivator; John Deere 726 Field Finisher; John Deere 960 Field Cultivator; John Deere 1010 Field Cultivator; Redline 30' Harrow; Case IH 490 Disk; Kewanee 1010 Disk; 1 Shank 3-point ripper; Kewanee 4 section harrow on cart; Ford 118

TRUCKS & TRAILERS: 2021 Featherlite Aluminum livestock trailer, 36ft long x 75ft wide; 2020 Featherlite Aluminum livestock trailer, 24ft long x 75ft wide; 2018 Kaufman Flatbed Trailer with 2 - 3ft x 34in ramps; 2015 Volvo VNM64T200 with 253K miles; 2015 Wilson Hopper 43ft long 78in sides; 2014 Lamar 250-gal fuel trailer; 2012 Freightliner Cascadia 125; 2008 International 4400SBA-SB-4x2; 2005 Jet Grain Hopper; 2000 Wabash Van Trailer; 1995 White/GMC WG64T day cab; 1992 Wilson Hopper. 43ft long x 66in sides; 1991 Freightliner FLD120; 1982 Brenner Tanker, 40ft long; 1980 Heil fuel aluminum Tanker Trailer; All Purpose Flatbed Trailer 27.5ft long plus 3ft beaver tail

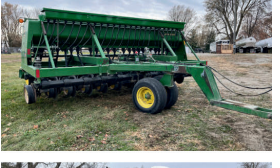
HARVEST: 2022 Mac Don FD135 draper, 35ft 3400 acres; John Deere 893 8 row 30 inch corn head; Kelderman 8 row 30 corn reel; EZ Trail 680 head trailer, 26ft beam; LCD head trailer, 22ft; Brent 420 grain cart; M&W grain cart; Heider grain-o-vator; 2 - Parker 4000 Gravity Wagon; Multiple Gravity Wagons; 2023 Brandt Grain Deck drive over conveyor; Westfield MK130-91 auger; Westfield 10 x 81ft auger; Westfield 8 x 31ft truck auger; Westfield 6x15ft Truck auger

ATTACHMENTS: Diamond Skid Loader Forestry Mulcher; Skidloader Sicklebar Mower; Westendorf TA-46 Loader with 7ft bucket; Buhler Allied 595 loader with IH mounts; John Deere 260 Loader; Calfee manufacturing pickup bale stabber; Meteor 3-point 60in snowblower; Buhler 8ft blade; Frontier 7ft box blade/ripper combo; Industrias America 120R blade; Ford 19-344 6ft blade; Land Pride 55 10ft blade; Danuser 3-point post auger; 3-point bale unroller; Multiple loader and skid loader attachments

BUILDINGS: 3 - Portable Buildings on mobile home frames - 40x12ft external

MISCELLANEOUS: 3000 Flat Bottom tank w/ transfer pump; Katolight PTO generator, less than 500 hours estimated; Monroe Truck Bed Salt/Sand Spreader; Trench/wheel track filler disk; Brine mixing system with Monroe tank; 2 - Greenlee Conduit benders

MORE ITEMS ARRIVING AFTER SALE BILL PRINTED



www.RiceAuctionCompany.com
Jake Rice - Auctioneer - 641-202-3315

Online Bidding Powered By
AuctionTime.com
 Lunch stand & restrooms on-site.

Disclaimer: This will be a LIVE auction with ONLINE bidding. NO onsite buyer's premium, 5% buyer's premium to winning online bidders capped at \$2,500 per item. Loader and operator will be available sale day or by appointment. Payments accepted are cash and check. NOT RESPONSIBLE FOR ACCIDENTS, ERRORS OR OMISSIONS. ANNOUNCEMENTS MADE ON SALE DAY TAKE PRECEDENCE OVER ANY PREVIOUS WRITTEN OR VERBAL STATEMENTS. All items are sold as-is, where is with no guarantees or warranties.