

LIVE AUCTION *Running 2 Rings*

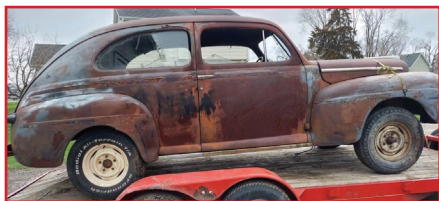
VEHICLES, TRAILERS, ANTIQUES, SHOP EQUIPMENT, LANDSCAPING, HOUSEHOLD, LUMBER, RAFTERS & SHEETING, ASPHALT MACHINE AND MUCH MORE!!

SATURDAY, AUGUST 3, 2024 • 10:00 A.M.

STEVE & JEAN EPLEY, OWNERS

***Sale Location: 205 Road M47, Walnut IA 51577**

(2-1/2 Miles North of I-80 Exit #46, Walnut IA, on County Road M47)



1965 MUSTANG COUPE 289 AUTOMATIC, GOOD CONDITION RUNS GOOD! w/Edelbrock 4-BBL, Headers, (Original Carb, Manifold and Exhaust Included). ***PROJECT VEHICLES:** 1956 Chevy 2 Door Sedan Body and Frame. - 1956 Chevy 4 Door Body and Frame. - 1955 Ford 2 Door Sedan. - 1955 Ford 4 Door. - 1955 Ford Sedan Delivery w/272 ci OHV V-8, 3-Spd w/Overdrive, All Original. - 2004 Chevy Half Ton Pick-up, Runs and Drives (Rusty). - 1971 Olds Cutlass for Parts. - 1956 Ford Fairlane Chassis (Reconditioned). - Numerous 50's Ford Parts (Body Parts, Doors, Quarter Panels, Engine, & Transmissions Parts, Radiators, Dashboards, Etc). - 1968 Chevy Parts, 327 Short Block w/ Heads. - 1977 Firebird Shaker Hood. - '88 Ford Tailgate. - Chevy Tailgate (1947-1954). - 1947 Ford 2-Door Sedan. - '47 Transmission, '47 Original Wheels, '47 Back Glass., '47 Trim and other Parts. - Ford F100 Pickup (No Engine) 4-Spd. - 1982 Yamaha 175cc Tri-Moto 3-Wheeler, Yamaha 125cc 3-Wheeler. - *Hurricane Deck Boat w/Trailer and Evinrude 100. - (3) Pair Bucket Seats. - Several Cragar Wheels. - Keystone Wheels. - Set of Aluminum Wheels for 1977 Trans Am. - Various Wheels and Tires. - Back Seat For Cutlass. - HD Twin Axle Trailer. - Single Axle Welding Trailer. - Single Axle 10' Trailer. - Twin Axle 14' Trailer. - Cushman Rail Road Maintenance Vehicle (Needs Engine). Harley Division Fat Boy Seat. - CATERPILLAR #12 MOTOR GRADER 8T5953 (Not Running). ***COLLECTIBLES:** Liquid Carbonics Soda Fountain from Walnut IA. - Hard Ice Cream Freezer. - Rockola Juke Box. - Optometrist Chair. - (2) Toledo Scales. - Balance Scale. - Dinner Bell. - School Desk Chairs. - Oil Cans. - Tin Containers. - License Plates. - (5) John Ebner Numbered Prints in Frames. - W & L E Gurley Transit. - White Porcelain Stove. - Cast Iron Hot Plates. - Cadaver Lift. - Lighting Rods. - Toy Fire Truck, Gleaner Combine, Tonka Truck. - 15-Gal Crock. - White Sewing Machine w/Wood Cabinet. - Signs: Schlitz Clock Sign, Dale Earnhardt Lighted Budweiser, Bud Light, Michelob Lighted Sign, Meister Brau Sign, Crazy Jack's Casino Lighted Clock, Michelob Pool Rack Sign, Camel Sign. - Blakeman and Dobson Favorite Wooden Barrel Type Butter Churn. - Oil Lamp. - Steel Wheels. - Show Walker Safe. - Hereford Saddle. - Several Wooden Doors. - Coke Cooler. - Pressure Cookers. - Cream Cans. - Minneapolis Moline Z Tractor (Does Not Run). - Sales Counter. - Antique Buffet w/Mirror. - Play Ground Rides. ***ASPHALT MACHINE, LANDSCAPING, EQUIPMENT, ATTACHMENTS, LUMBER, LAWN:** 720 Patchman Asphalt Machine. - Electric Scissors Lift. - Large Landscape Rock, Rose Quarts, Red Fin Stone, Marble, Pavers, Brick, Pea Gravel, 5" River Rock. - Fine Sand, Cobble Stone. - Glass Blocks. - Artificial Turf. -500-Gal Propane Tank. - Anhydrous Tank Converted to Propane w/Wet Leg. - 65-Gal Propane Tank. - Pick-up w/ Flatbed. - (2) 6' Buckets for Bobcat. - Pallet forks for Bobcat. - (2) Concrete Mixers. - Cushman Mowers (Need Work). - Cushman Snowblower Attachment. Cushman Hyd Dump Trailer. - 22' White Steel Sheets. - 5'X10' Fiberglass Rail-car Liners. - HD Metal Doors. - 16' Rafters. - 6"X6" Timbers, 2X4's, Various Lumber and Steel Sheets. - Composite Decking. - Bridge Plank. - Wood Blocks. - Rubber Roofing. - Guard Rail Posts. - 8' Roll Up Door. - 14-Gal Fimco Sprayer. - Several 250-Gal Totes Cases. - Numerous LP Tanks and Cage. - (3) 35' Power Poles. - Black Stove Pipe. Chain Link Fence. - (3) Yard Carts. - Craftsman Front Tiller. - Viper Tiller. - Yard Aerator. - (2) Husqvarna Chain Saws. - Toro Snow Blower. - Craftsman Snow Blower. - New Oval 10-Gal Galvanized Tank. - Concrete Vibrator. - Honda Gas Post Hole Digger. - HD 4-Wheel Commercial Carts. - Motorcycle Chock. - Cub Cadet Weed Eater. - Steel Gates 16', 12', 8'. - Several Steel Posts. - Older JD Rotary Hoe. - Firewood. - Yard Tools. ***SHOP:** Ranger Rimguard Clamp System Tire Machine. - Hobart Champion 10,000 Welder w/Gas Motor, Lincoln Arc Welder. - Welding Trailer. - (2) Complete Acetylene Torch Sets. - (2) Gray Model TNT 550 Truck Air Jacks. - 80-Gal BlackMax Air Compressor. - Sanborn 5-HP Air Compressor. - Large Schmidt Sand Blaster. - Sullair Portable Air Compressor w/4 Cyl GM Engine. - 2-Man Sandblast Cabinet. - (2) Bench Grinders on Stand. - Standing Drill Press. - Craftsman Stack Tool Chest. - Misc Tool Boxes. - (2) Engine Stands. - Floor Jacks. - Car Stands. - Cherry Picker. - DeWalt Chop Saw. - 28' Fiberglass Ladder. - 48" DBD Floor Fan. - 24" Floor Fan. - Ventilation fans. - Contractor Tile Saw. - Workforce Tile Saw. - Craftsman 6" Jointer. - Craftsman Table Saw. - Atlas Table Saw. - 16-Gal Shop Vac. - Craftsman Jig Saw. - Delta Sander. - Paslode Brad Nailer. - Pipe Vise & Cutter. - Airless Stand up Paint Sprayer. - Log Chains. - Tow Ropes & Cables. - Shop Lamps. - Metal Wall Cupboards. - Steel Cabinets. - Several Power Tools. - Jensen Wood Burner. - Pick-up Tool Box. - Metal Saw Horses. - Metal Tables. - Waste Oil Tank W/ Pump. - HD Electric Cords. - and Much More ***RECREATION & GUN RELATED:** MEC 9000 Reloader. - MEC SS77 Reloader. - Sporting Clay's. - Gun Powder. - 30# Shot. - Several Boxes of 12-GA Ammo. - (2) BB Pistols. - Bow & Arrow. - Duck Decoys. - Osagian Canoe. - Live Traps. - Rabbit Cages. - Several Dog Kennel's. - EZ GO & CLUB CAR Gas Golf Carts (Need Work). - Electric Golf Cart (Need Work). - 2 -Sets Golf Cart Wheels & Tires. - (2) Gauntlet Bicycles. - Swimming Pool Bottom Cleaner and Salt Generator. - Swimming Pool Pump & Supplies. - Large Outdoor Smokers. - Martin Birdhouse. ***HOUSEHOLD:** Very Nice Oak (Symphony) Electric Fireplace. - Leather Recliner. - Oak Credenza. - (2) Wood File Cabinets. - Wooden Office Desk. W/Glass Top. - Castle Marie 3'X3' Picture. - Wood Shelf. - (2) 4'X3' Mirrors. - Office Scanner. - Nordic Trak Exercise Bike. - New Toys in Box: Harley Davidson, Wynn Transport Semi, SAIA Pup Tractor Trailers, Con-Way Pup Tractor Trailers, ViTran Express Pup Tractor Trailers. - Bird Houses. Padded Metal Bar Stools. - Fire Pit. - Safe. - Patio Heater. - Yard Windmill. - Concrete Bird Bath. - Squeeze Strainer. - Paint.

FOR INFORMATION AND PICTURES SEE: auctionzip.com

AUCTIONEERS: Leroy Phillips 712-249-1606

Randy Bates 712-789-2253

Lunch on Grounds Terms: Cash or Good Check, Not Responsible for Accidents or Theft

Property Connection Real Estate & Auction

Dennis 'Leroy' Phillips 712-243-4408

