

Kenney Family

WAYNE COUNTY, IOWA

442.57

SURVEYED ACRES IN 9 TRACTS

LAND AUCTION

OCTOBER 11th - 10AM
CORYDON, IOWA

Property Location: 180th St & Idaho Rd |
Allerton, IA 50008

Auction Location: Walden Park Clubhouse
(Corydon Golf Course) 501 S. East St. Corydon,
Iowa



HIGH QUALITY FARMLAND



OUTSTANDING HOME & BUILDINGS



RECREATIONAL LAND

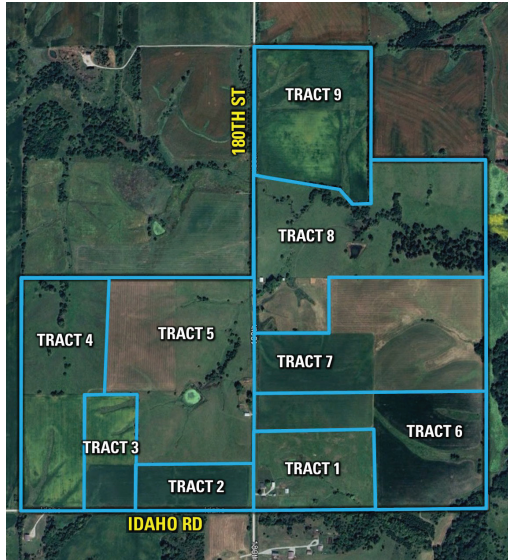


PASTURE LAND

Peoples Company is honored to be representing Doris M. Kenney and The Estate of Dean D. Kenney with the auction of their family farm located south and east of Corydon, Iowa.

The Kenney farmland portfolio is comprised of 442.57 surveyed acres and will be offered in nine tracts ranging from 16 acres m/l to 84 acres m/l presenting a unique opportunity for you to assemble high quality farmland, pasture land, recreational land and an outstanding home and buildings all located in a tightly held area of Wayne County, Iowa that has not been available to the public in many years.

This is a rare opportunity to assemble good quality tillable ground, pasture and hay ground, recreational ground and building site locations that best fit your needs and at your price.



TRACT	ACRES
1	28.13±
2	15.90±
3	17.81±
4	51.42±
5	75.23±
6	52.83±
7	67.58±
8	84.33±
9	49.34±



**Full Terms & Conditions are Available Online.
Online Bidding is Also Available.**