

2 DAY ESTATE FARM AUCTION

ONLINE ONLY

ROGER BERNDT ESTATE

21454 G AVE., HUBBARD, IOWA

1 MILE SOUTH OF BUCKEYE, IOWA

WEDNESDAY, NOV. 13 AND THURSDAY, NOV. 14

VIEWING WILL BE MONDAY, NOVEMBER 11 · 9:00-4:00

ALL ITEMS TO BE REMOVED BY NOON SATURDAY, NOVEMBER 16

SELLING WEDNESDAY, NOVEMBER 13 ON www.auctiontime.com

VEHICLES, FARM & INDUSTRIAL EQUIPMENT

MOTOR HOME-VEHICLES: 2011 NEWMAR MOUNTAIN AIRE 43' MOTOR HOME; ONE OWNER; CUSTOM BUILT FOR ROGER AND SHIRLEY BERNDT; 68,000 MILES; 3 SLIDE OUTS, FULL SLIDE OUT ON LEFT SIDE, 2 SLIDE OUTS ON RIGHT SIDE; TAG AXLE; 450 CUMMINS; ALLISON 6 SPEED; 20 KW GENERATOR; 3 AIR CONDITIONERS; FULL AWNINGS; POWER SHADES; ELECTRIC FLOOR HEAT; 3 TVS; 1 FULL BATH; 1-1/2 BATH; KING SIZE SLEEP NUMBER BED; CHERRY HARDWOOD CABINETS; HEATED SEATS; GENERATOR AUTOMATIC START FEATURE; POWER DUO DAY/ NIGHT WINDOW SHADES; DRIVER POWER WINDOW; MAGNETIC WINDSHIELD COVER; MOTOR HOME IS IN EXCELLENT CONDITION. HYDRA LIFT CARRIER MODEL M090; USED ON BACK OF MOTOR HOME SELLS SEPARATE.

VEHICLES: 2011 FORD EXPEDITION XLT; LEATHER; FULL POWER; LOADED WITH OPTIONS; 27644 MILES; VERY NICE; 2006 FORD F-250 XLT SUPER DUTY; DIESEL; EXTENDED CAB; FULL POWER; LOADED WITH OPTIONS; 100986 MILES; 1995 FORD F-150 XLT EXTENDED CAB; GAS; FULL POWER; 8' BOX; 150,000 MILES; 1988 GMC 6000 VAN TRUCK; DOES NOT D RUN; 20' VAN BODY; 366 MTR; 5 SPEED; 155000 MILES; 1974 LINCOLN CONTINENTAL MARK 1V; LEATHER; 84446 MILES; DOES NOT RUN.

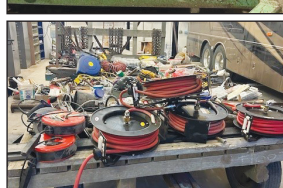
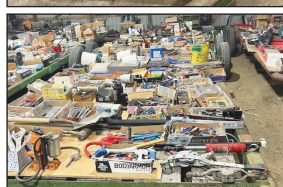
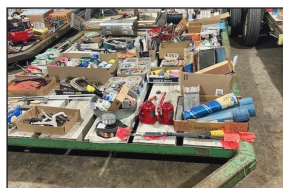
TRAILERS: 2022 H&H 15' ENCLOSED VAN TRAILER; FOLD DOWN REAR DOOR; SIDE DOOR; SPARE; 2016 H&H 24' ALUMINUM SPEED LOADER TRAILER; WINCH; ELECTRIC JACK; HYDR TILT; TOOLBOXES.

FARM TRACTORS & EQUIPMENT: 1984 JD 4450 POWER SHIFT; MFWD; AS-IS TRANSMISSION SLIPS IN SOME OF THE GEARS; SN RW4450P015654; WEIGHTS; QUICK HITCH; MOTOR RUNS GOOD; 9151 HRS; 1974 JD 4630 POWER SHIFT; JD 58 LOADER; 20.8X38 (NEAR NEW); 7431 HRS; 1964 JD 4020 DSL; POWER SHIFT; 18.4X34 (GOOD); FRONT WEIGHTS; NO SERIAL NUMBER; IH 460 GAS; NF; FH; SN 64310S; FENDERS; RUNS GOOD; JD 401B, GAS, WOODS 306 72" BELLY MOWER; RUNS GOOD; NH 456 SICKLE MOWER; 9' BAR; 3 POINT; HALE MIST BLOWER MODEL 1.0V-12; 3 POINT; ALLIED 96" 3 POINT SNOW BLOWER; 19.5LX24 & 18.4X34 CHAINS; AC 7' 3 POINT DISC.

CONSTRUCTION EQUIPMENT: CASE 580 K BACKHOE & LOADER; 4 IN 1 BUCKET; MFWD; EAH; CAB; SN 17418273; HYDR THUMB; 4967 HRS; CASE 570L XT LOADER TRACTOR; MFWD; SN JG0260006; HYDR LANDSCAPE HITCH; 3 PT ALL HYDR BOX BLADE; 4631 HRS; JLG 60 HA MAN LIFT; NEW TIRES; DUAL FUEL; 4595 HRS; SN 0500019048; RUNS AND OPERATES; JLG 45HA MAN LIFT; 1977; 2WD; DUAL FUEL; SN 0300027238; RUNS & OPERATES; 2466 HRS; MEC 2548 HT SCISSOR LIFT; SN 07104139; WORKS GOOD; KOMATSU FG-14-10 FORK LIFT; SN 10154; UK HRS; RUNS; NEEDS SOME WORK ON FUEL SYSTEM; DATSUN FG105 FORK LIFT; SN FG 105-009-243; 5000#; RUNS GOOD; FORK EXTENSIONS; LOADER FORKS; DITCHWITCH 1820 KE TRENCHER; KOHLER MOTOR; SN 1M1627; SHEDDED; NOT RUNNING; DYNAPAC CC10 SELF PROPELLED ROLLER; WATER SPRAY; DIESEL; RUNS AND DRIVES; WORKSAVER SG36 3 POINT STUMP GRINDER; PTO DRIVE, LOW USAGE

FOR COMPLETE LISTINGS NOVEMBER 13

SEE www.auctiontime.com or www.dailyauctioncompany.com



SELLING THURSDAY, NOVEMBER 14 ON [HIBID.COM](http://hibid.com)

APPROXIMATELY 850-900 LOT NUMBERS

VERY LARGE SELECTION OF SHOP TOOLS, LAWN & GARDEN EQUIPMENT; GOLF CARTS; SCOOTER; (5) LINCOLN WELDERS; TORCHES; LATHES; AIR COMPRESSOR; POWER WASHERS; DRILL PRESSES; CAR HOIST (LIKE NEW) 8 TRAILER LOADS OF PARTS, HAND TOOLS; ELECTRICAL SUPPLIES; PLUMBING SUPPLIES; (10) STEP LADDERS; WOOD WORKING TOOLS; TABLE SAWS; PLANERS; GOOD SELECTION OF USABLE IRON; SCRAP IRON AND MANY ITEMS TO NUMEROUS TO MENTION.

SEE www.hibid.com FOR PICTURES AND COMPLETE LISTING

TERMS: PAYMENT MAY BE MADE AT SALE SITE ON WEDNESDAY, NOV 13 TILL NOON ON SATURDAY, NOV 16. CASH OR GOOD CHECK. ALL ITEMS REMOVED BY SATURDAY, NOVEMBER 16, 4:00. ALL ITEMS SELL AS-IS.



SALE CONDUCTED BY:
DAILY AUCTION COMPANY

COLO, IA, 515-231-4440

www.dailyauctioncompany.com